



Développement de molécules en oncologie sur la base d'une altération moléculaire

Prof. Christophe Le Tourneau, MD, PhD

Institut Curie

Head, Department of Drug Development and Innovation (D3i)

INSERM U900 Research unit

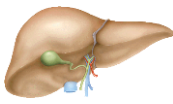
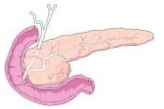
Paris-Saclay University

Ancestral paradigm

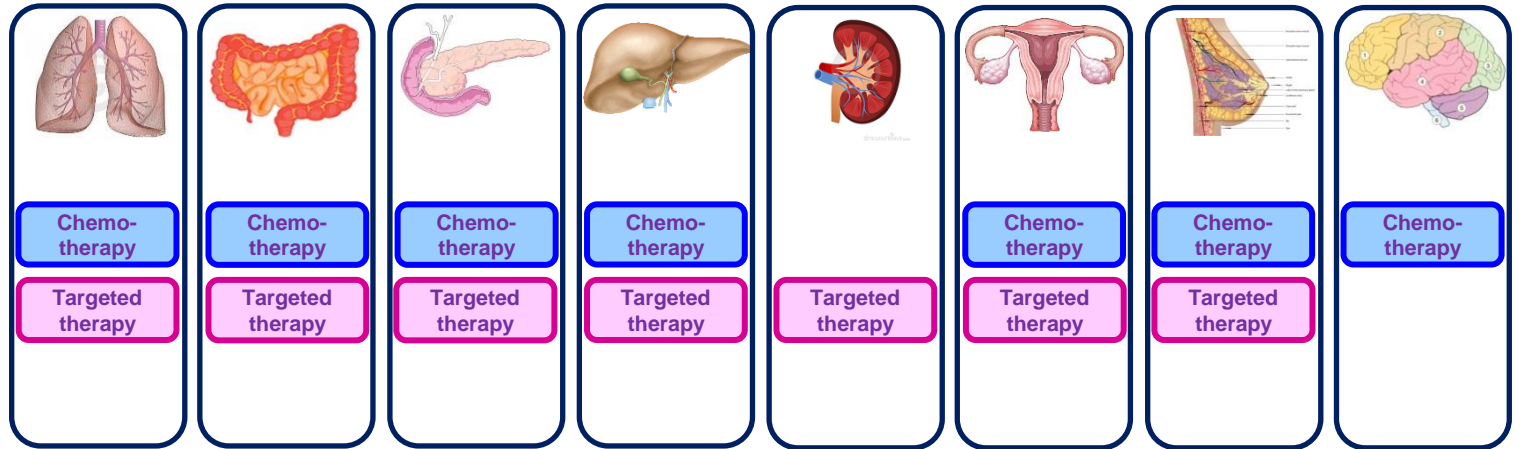
All comers



Chemo-therapy

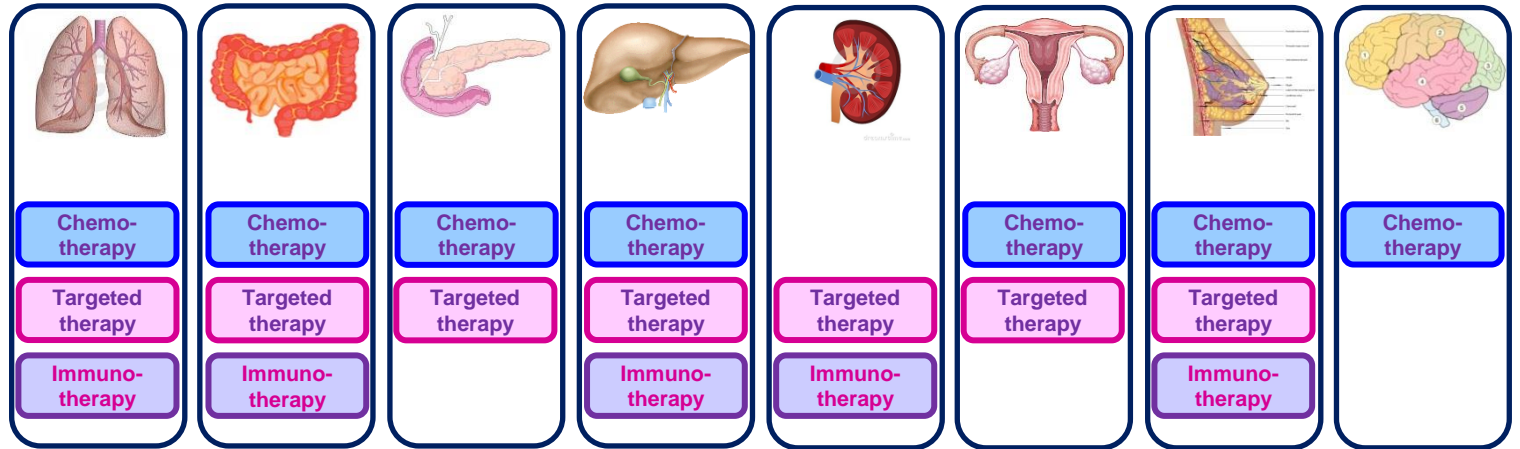


Ancestral paradigm



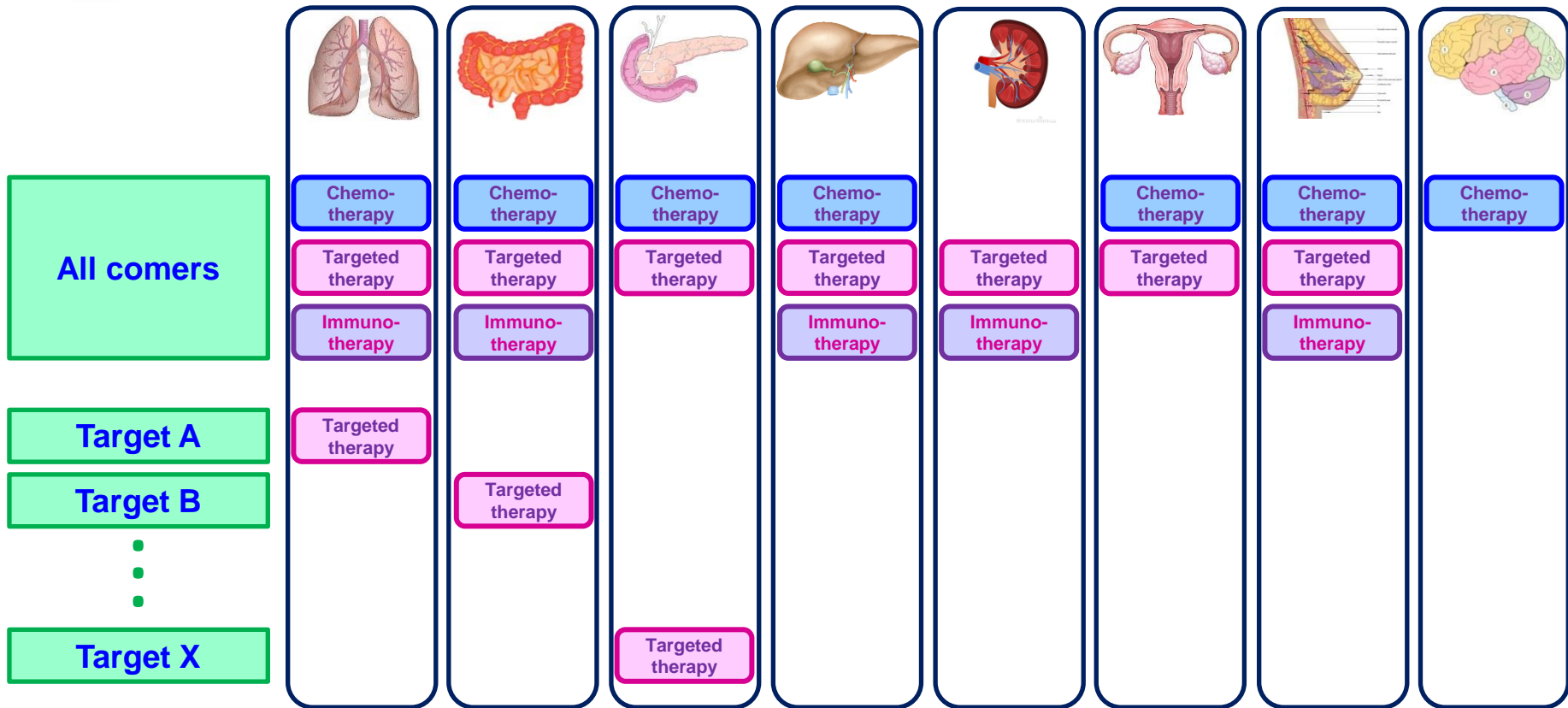
All comers

Ancestral paradigm



All comers

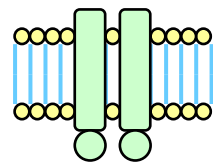
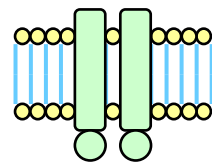
Biomarker-driven drug development



Biomarker-driven drug development



ALK



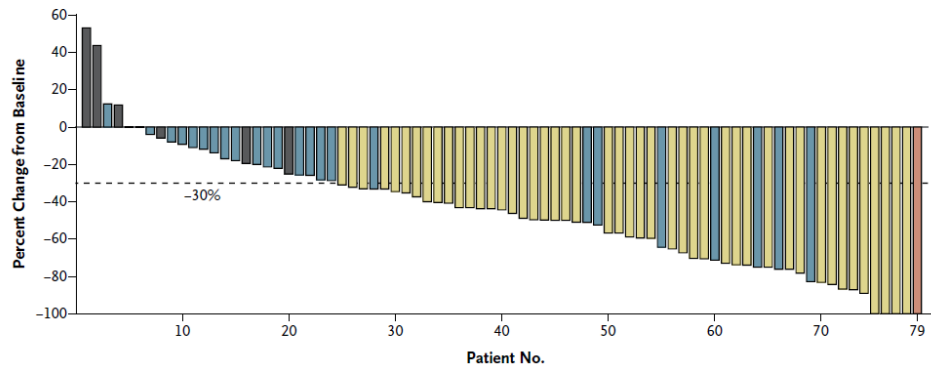
Translocation

Crizotinib

3%

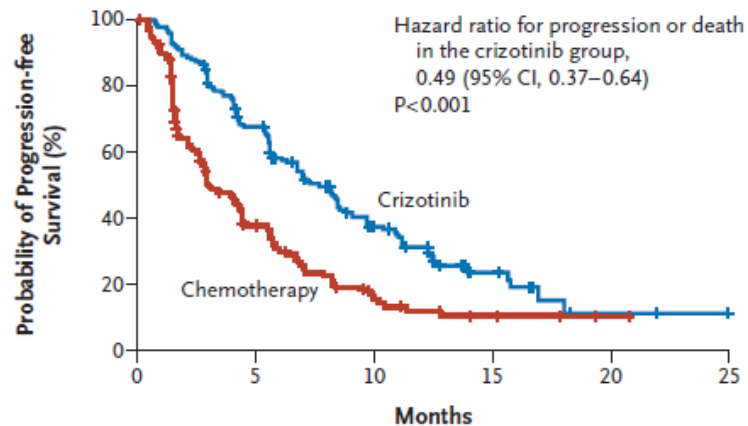
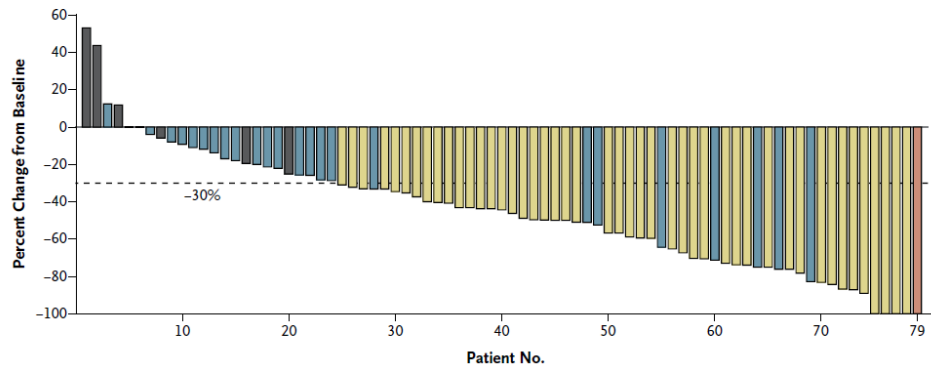


Biomarker-driven drug development





Biomarker-driven drug development



No. at Risk

Crizotinib	173	93	38	11	2	0
Chemotherapy	174	49	15	4	1	0

Biomarker-driven drug development

Target A

Target B

Target C

⋮

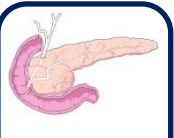
Target X



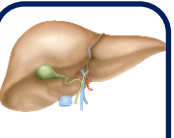
Targeted therapy



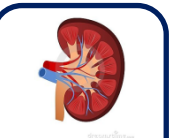
Targeted therapy



Targeted therapy



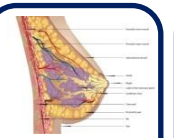
Targeted therapy



Targeted therapy



Targeted therapy

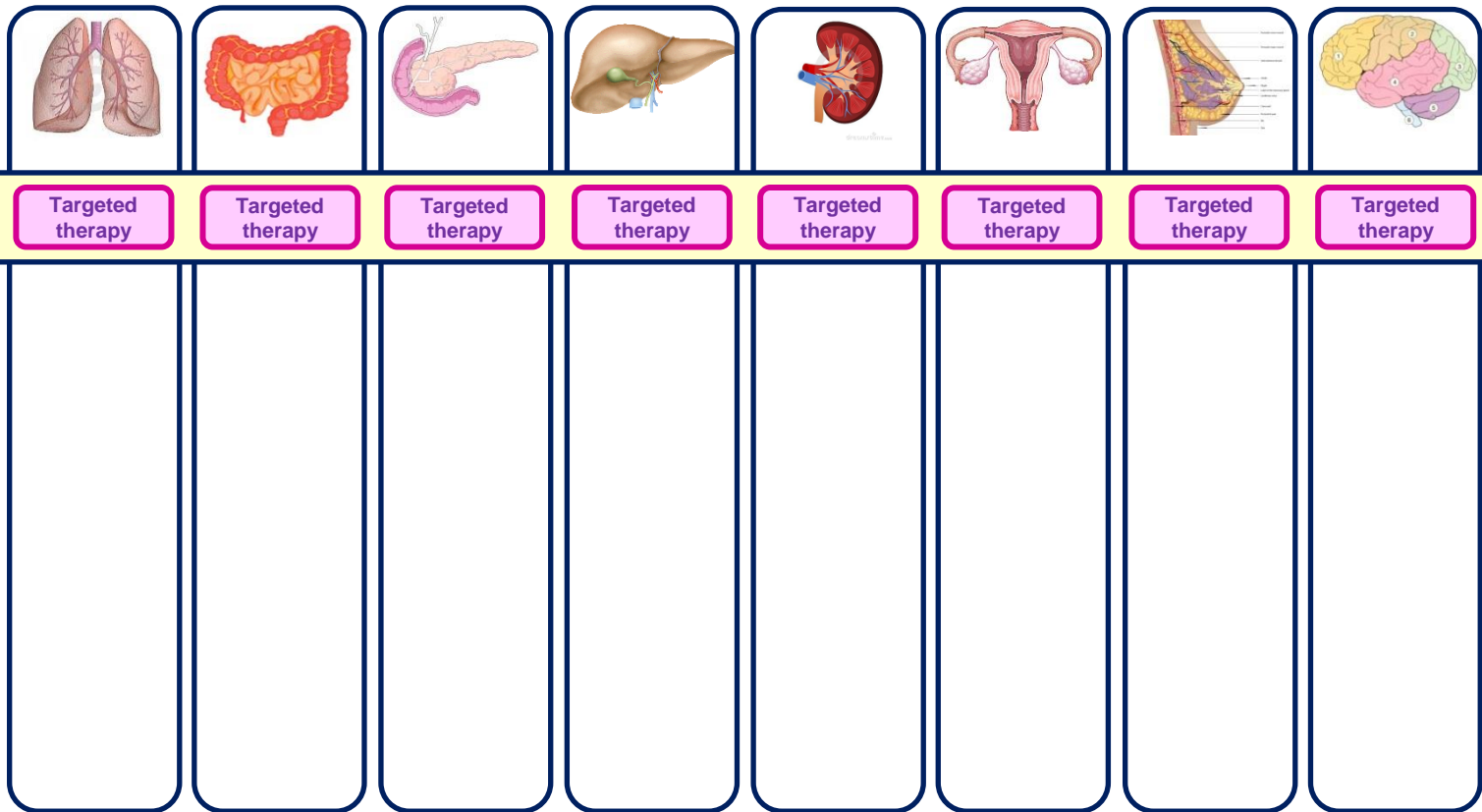


Targeted therapy

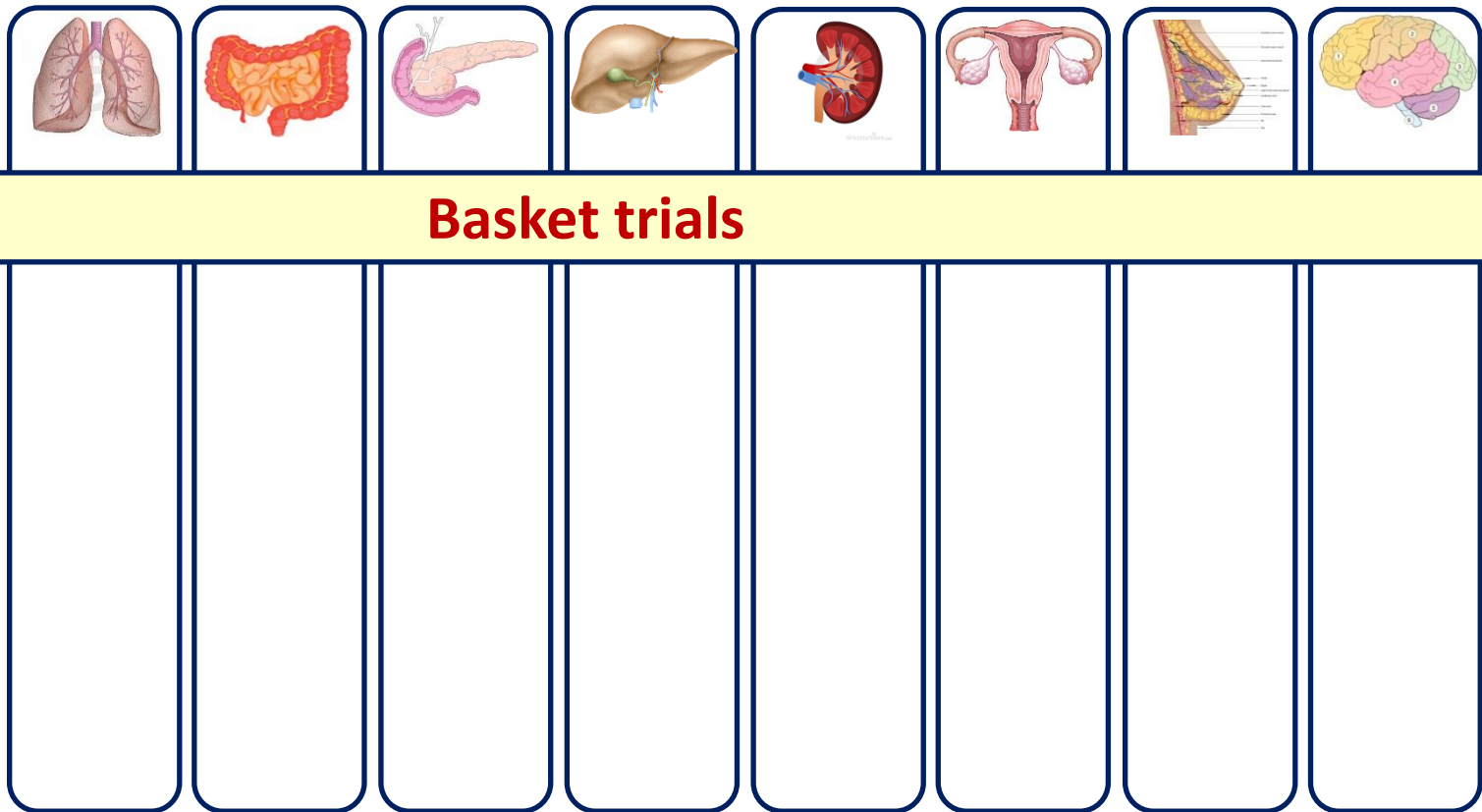


Targeted therapy

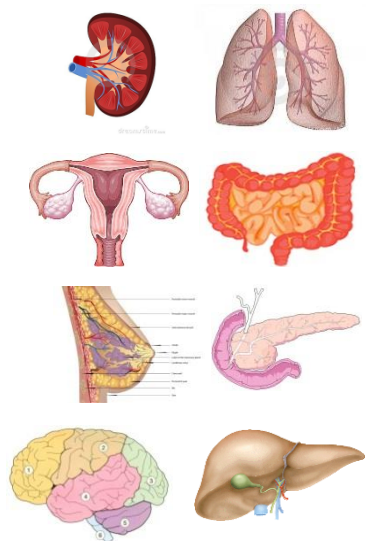
Biomarker-driven drug development



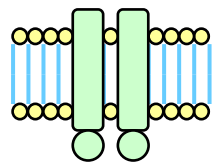
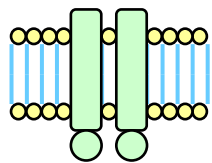
Biomarker-driven drug development



Basket trials



NTRK

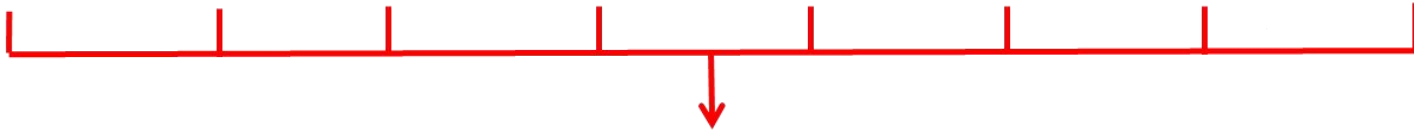
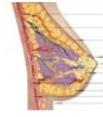


Translocation

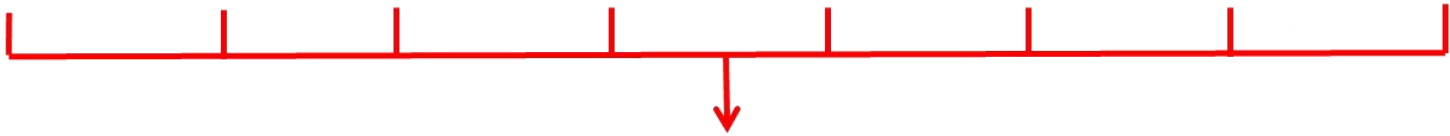
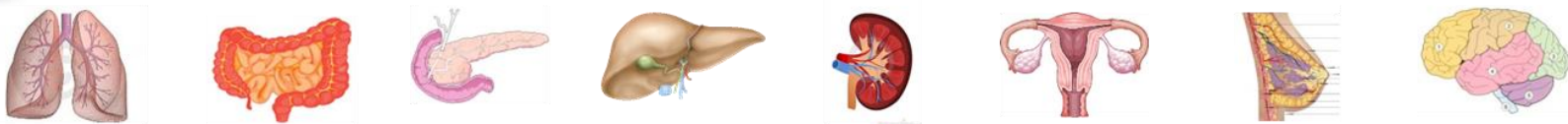
0.3%

Larotrectinib
Entrectinib

Biomarker-driven drug development



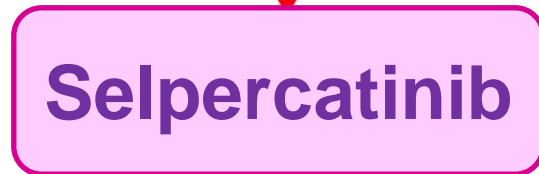
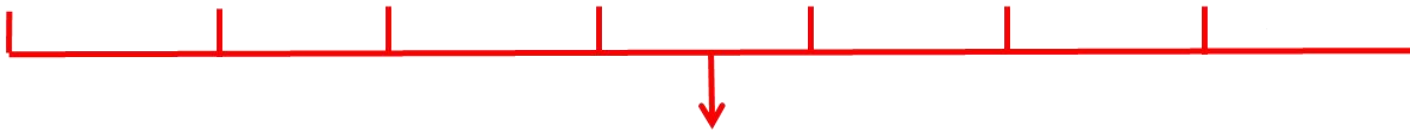
Biomarker-driven drug development



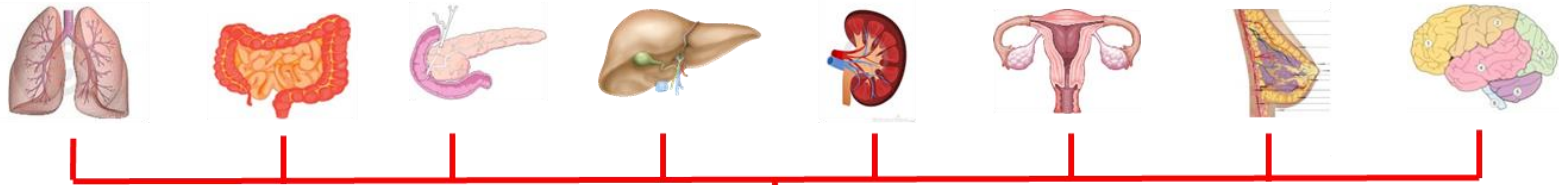
MSI high

Pembrolizumab

Biomarker-driven drug development

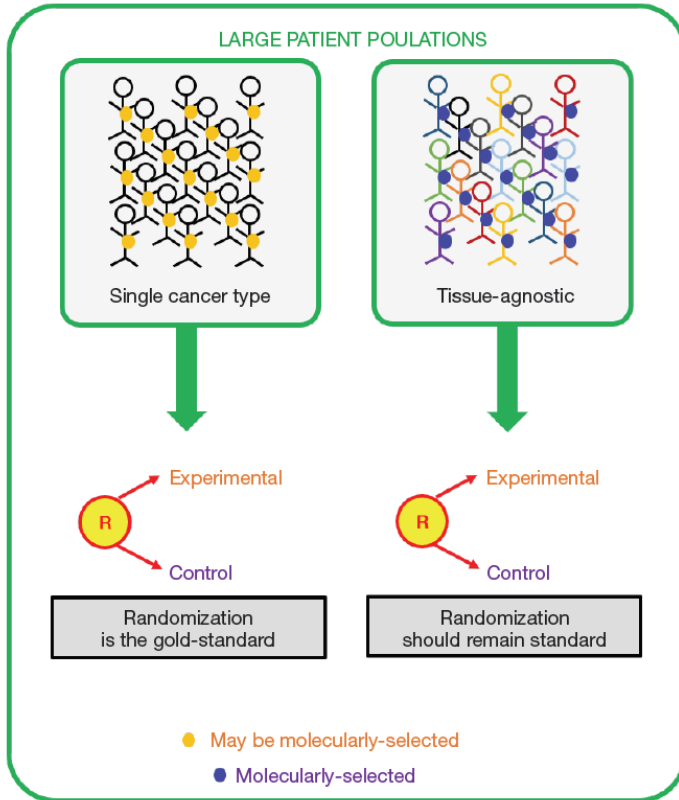


Biomarker-driven drug development

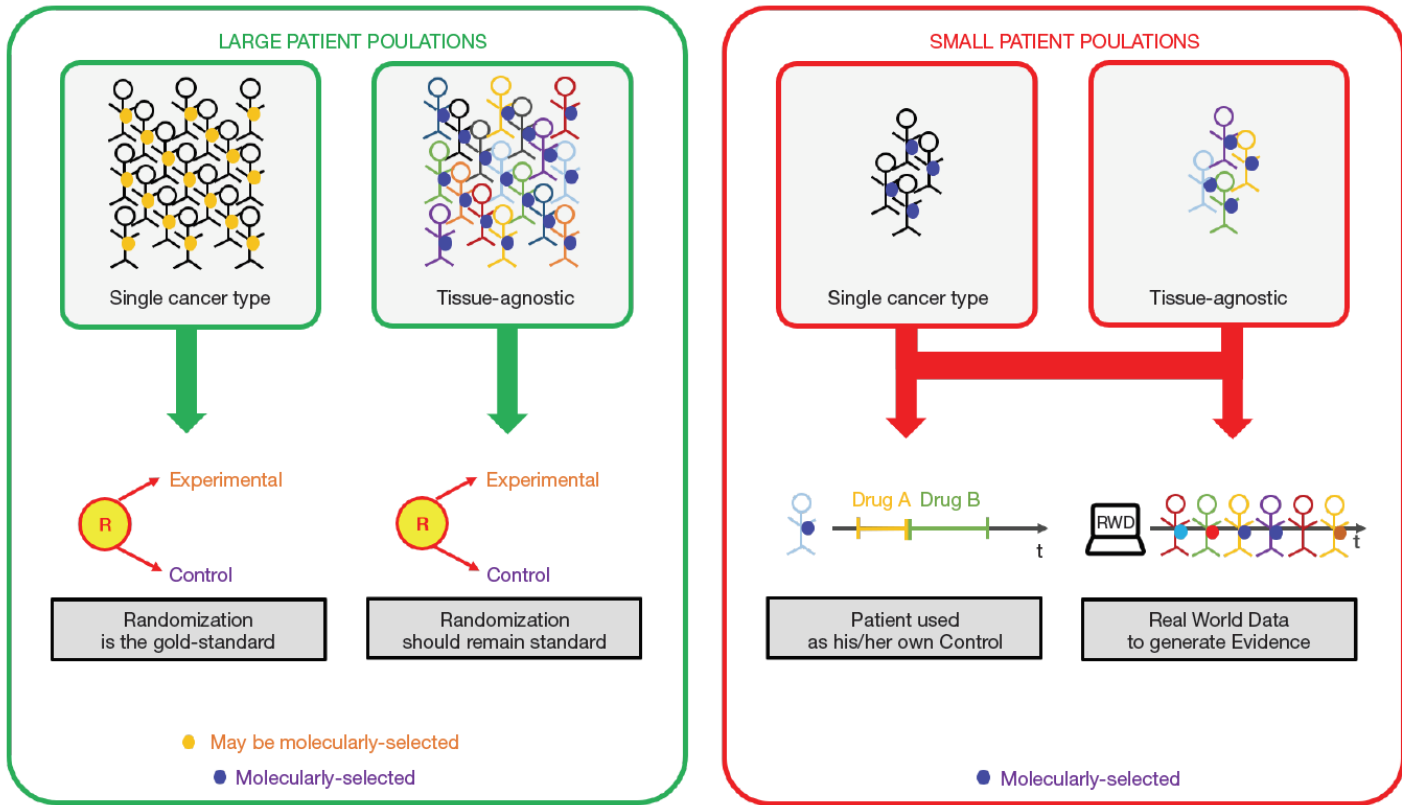


**Dabrafenib +
Trametinib**

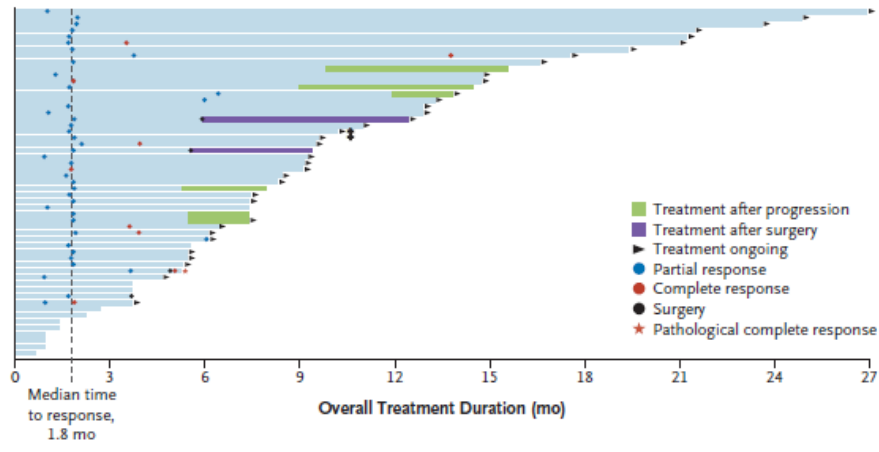
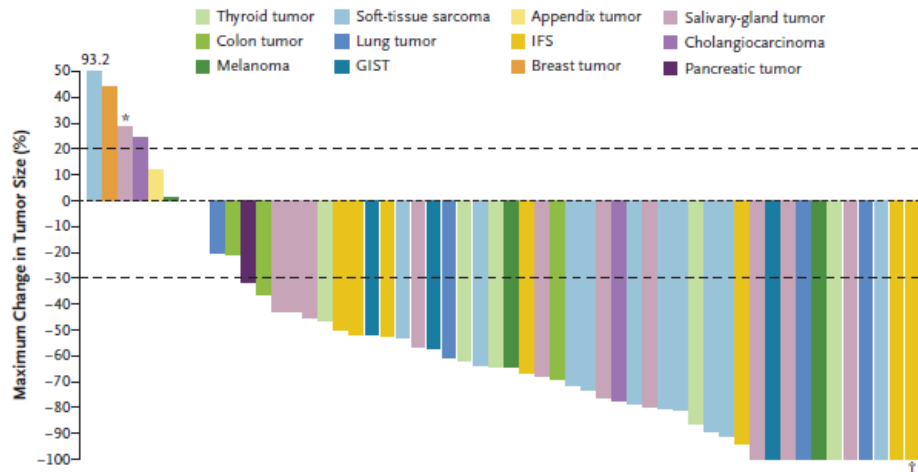
Perspectives



Perspectives

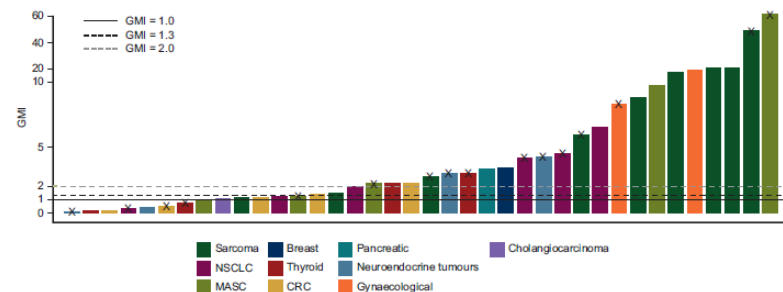
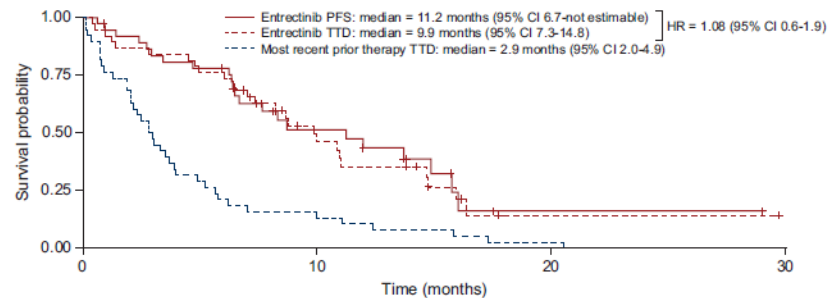
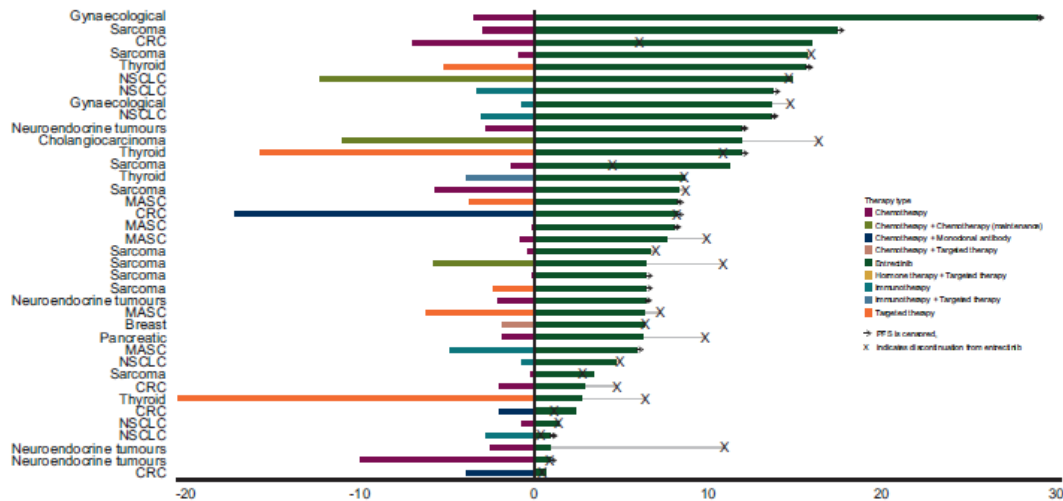


Perspectives

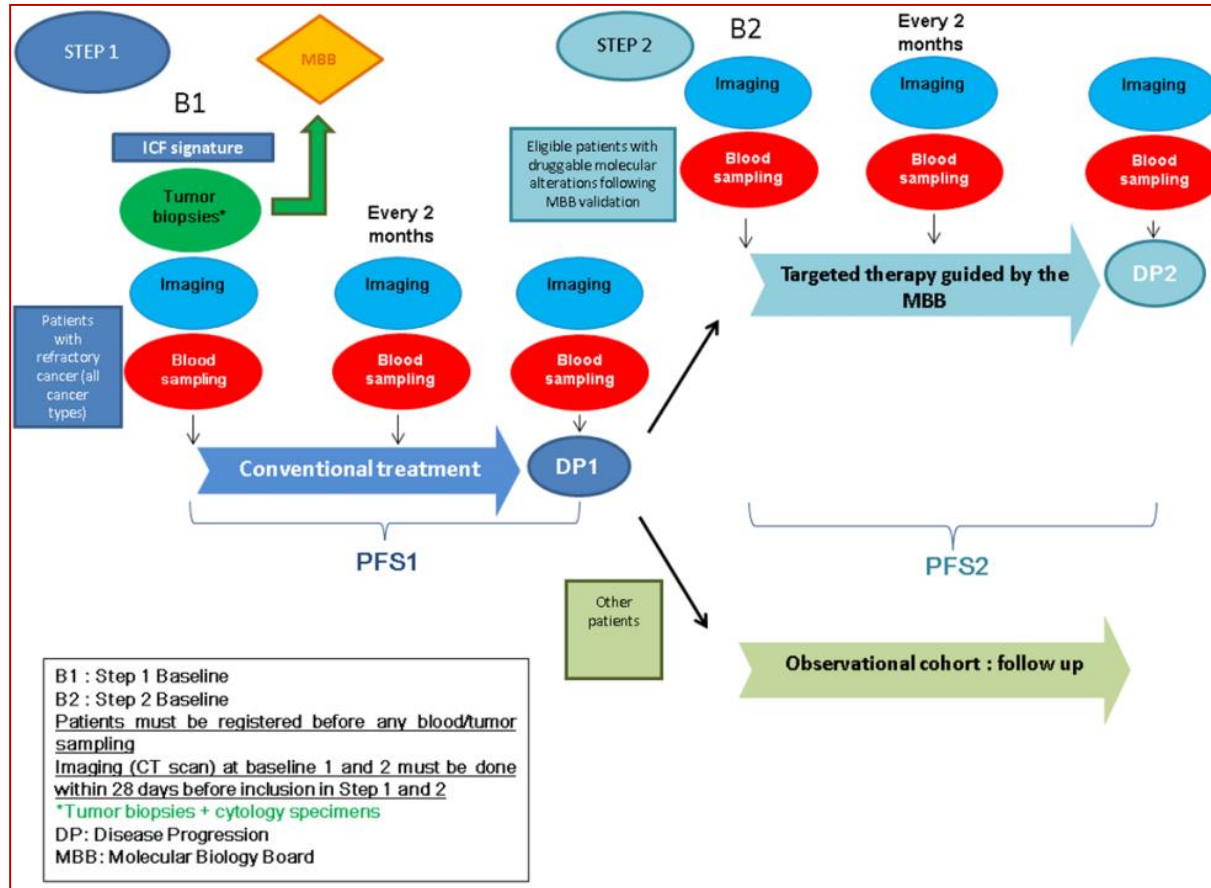




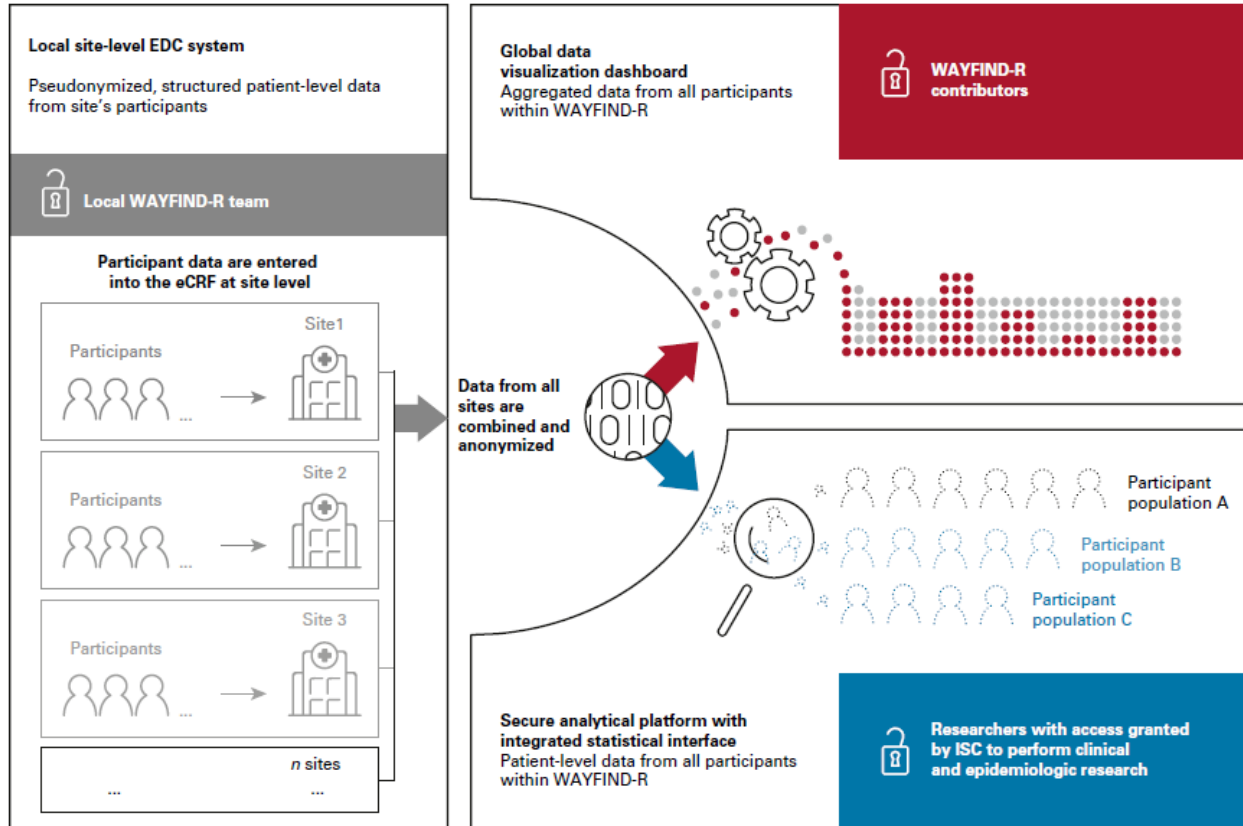
Perspectives



SHIVA02



WAYFIND-R





Department of Drug Development and Innovation (D3i)
Christophe.LeTourneau@curie.fr