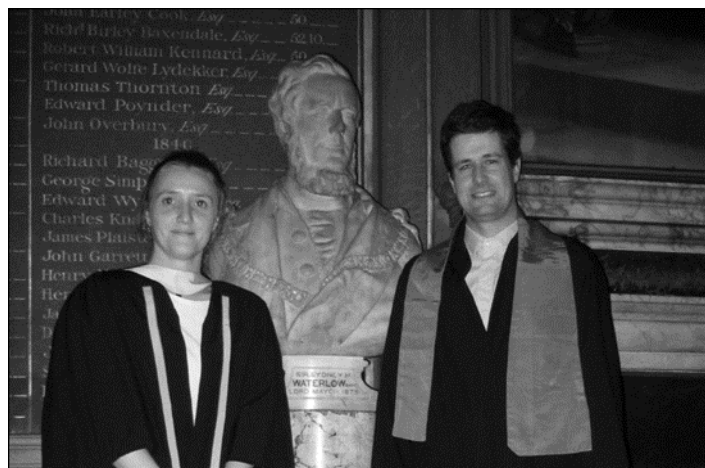


June 26, 2014



université
de BORDEAUX

Dr Frédéric DELOM
Dr Delphine FESSART

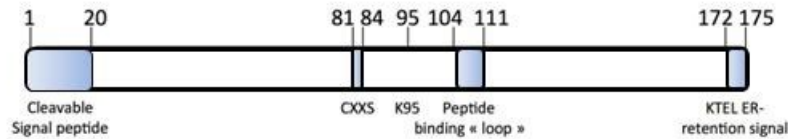
Bordeaux University
Bordeaux - France
frederic.delom@yahoo.fr
delphine.fessart@yahoo.fr

 **Inserm**

Institut national
de la santé et de la recherche médicale

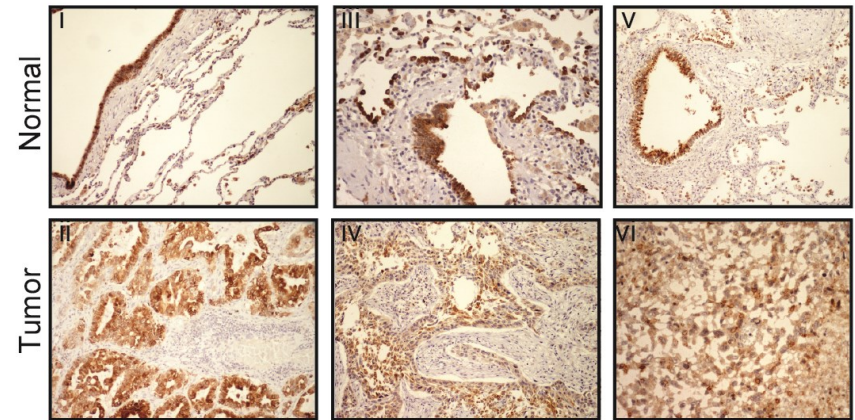

SFR
TecSan

Anterior Gradient 2 (AGR2) levels in lung tissues



Primary structure of the AGR2 protein: The identified functional domains and amino acids implicated in regulation of its function are indicated by blue shaded boxes.

a

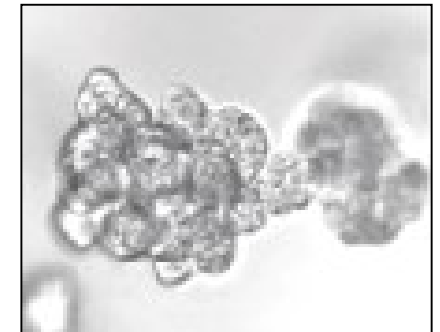
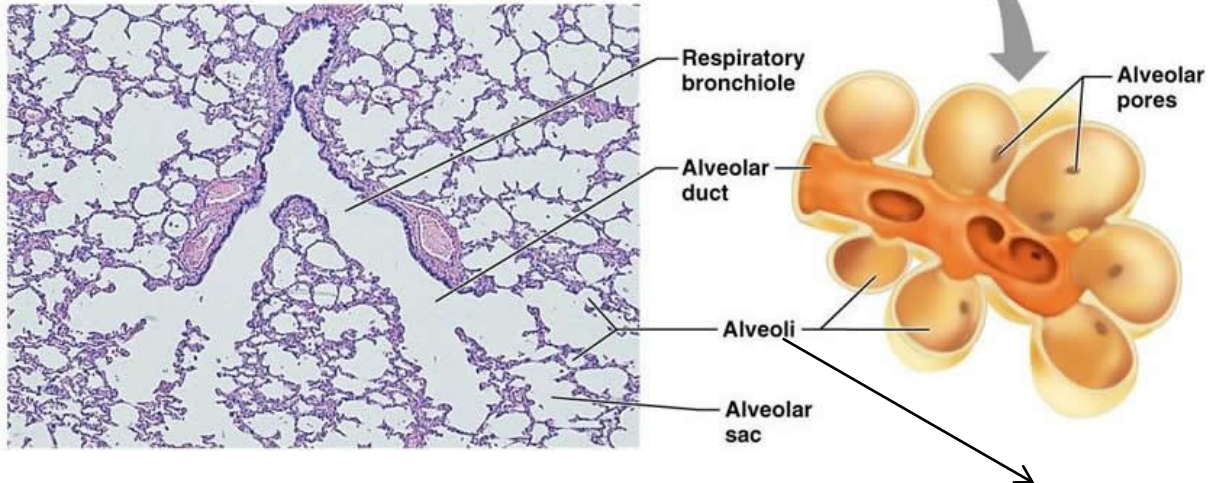
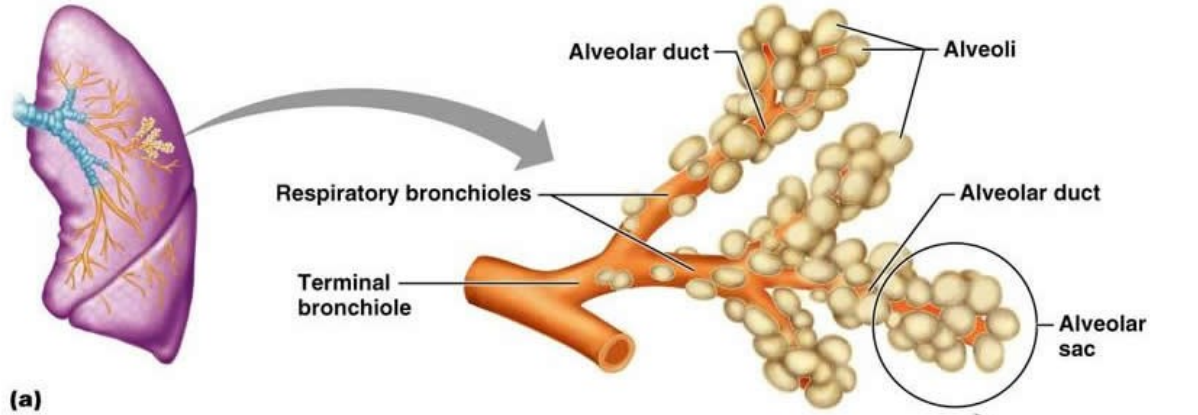


b

		Age	Sex	Grade	AGR2 intensity			Cumulative, %		
					Low	Moderate	High	Low	Moderate	High
Large cell carcinoma										
	1	49	F	IIIA			1			
Squamous cell carcinoma										
	1	73	M	IIIA	1	1		16.6	66.6	16.6
	2	57	M	IIIA						
	3	62	M	IIIA			1			
	4	60	M	IIIB				1		
	5	53	M	IIIB			1			
	6	58	M	IIIA			1			
Adenocarcinoma										
	1	52	F	IIIA	1		1	14.3	0	85.7
	2	59	M	IIIA			1			
	3	38	F	IIIB			1			
	4	49	M	IIA			1			
	5	60	M	IIIA			1			
	6	59	F	IIB						
	7	58	M	IIIA			1			
Total cases NSLCC								14.3	28.57	57.14

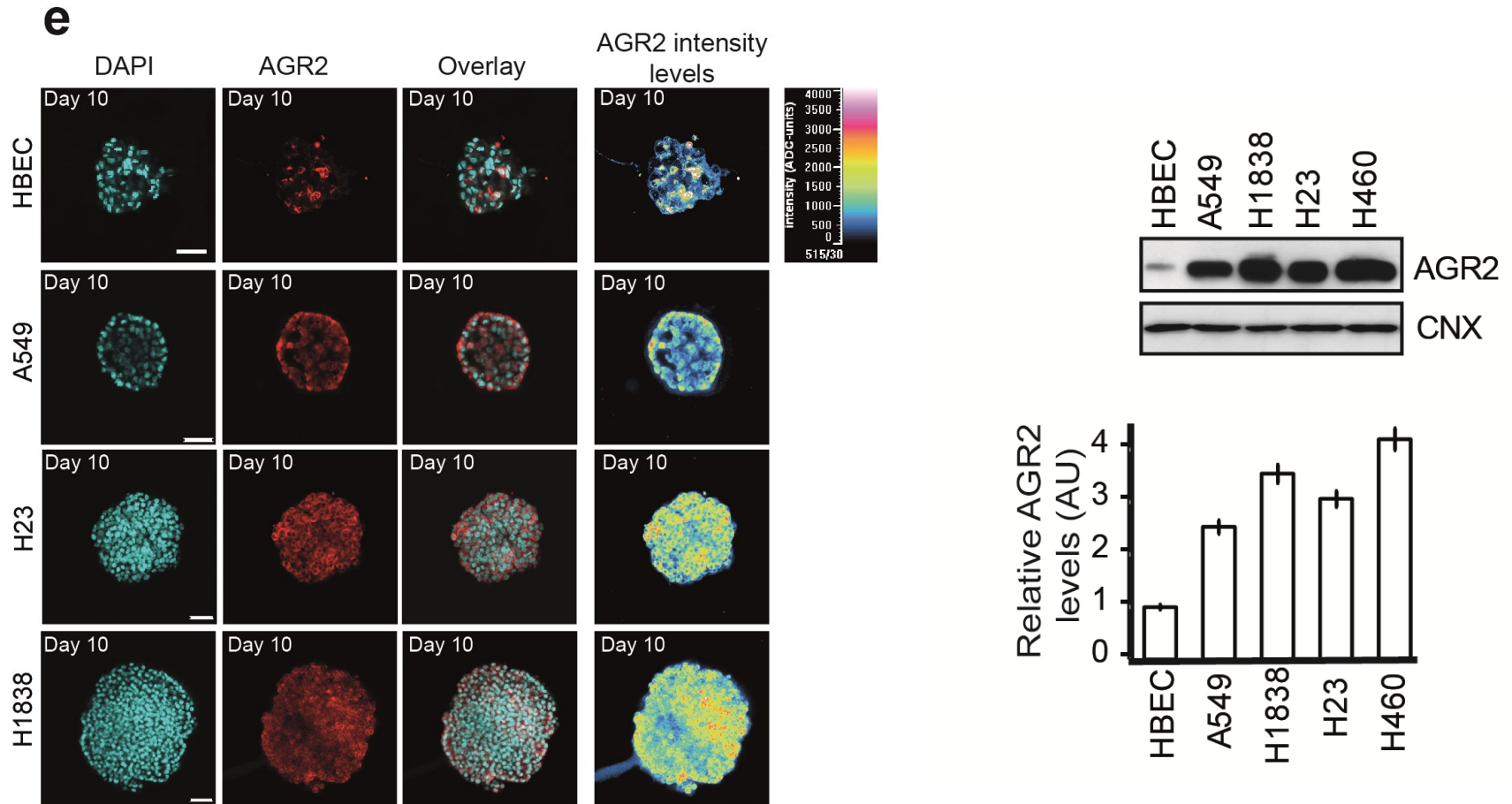
AGR2 overexpressed in lung cancer tissues

Organotypic culture of human bronchial epithelial cells



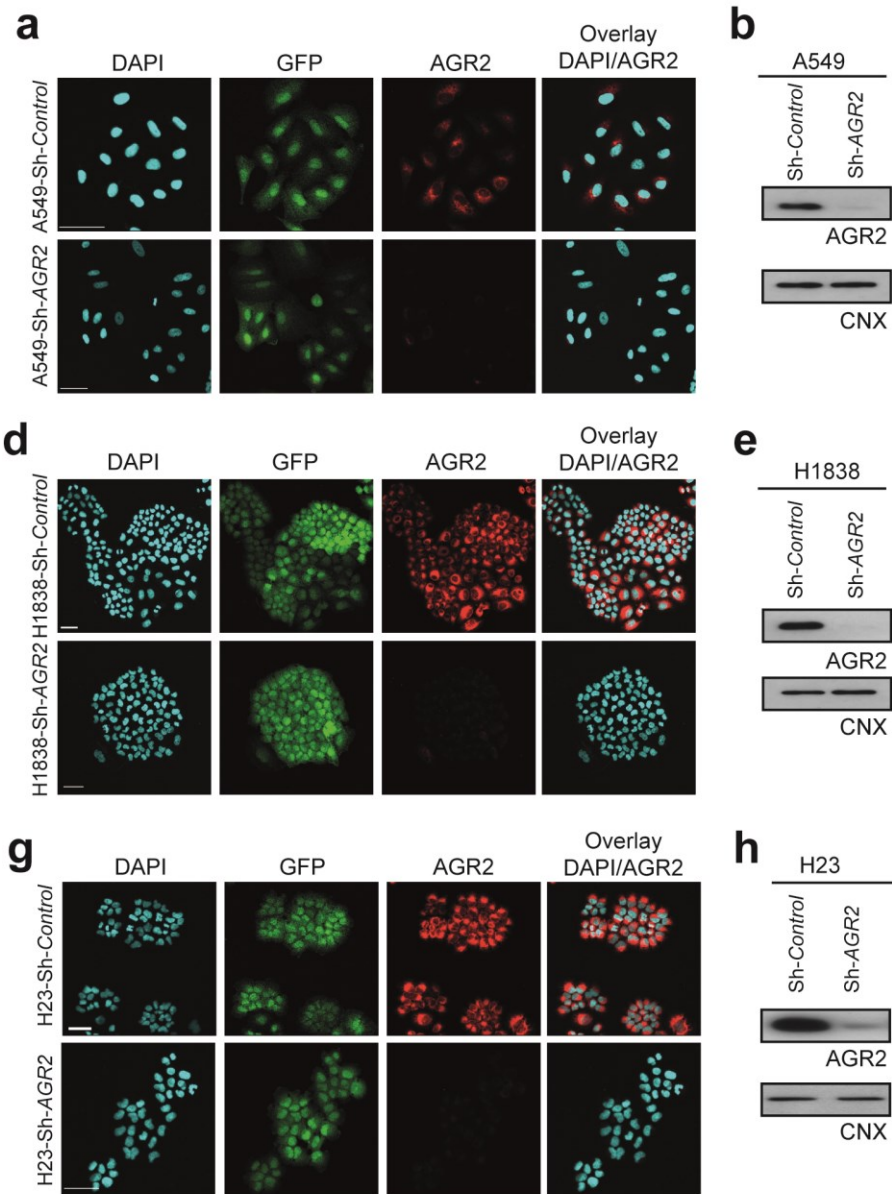
Eur Respir J. 2013 Nov;42(5):1345-56.

AGR2 levels in lung organoids

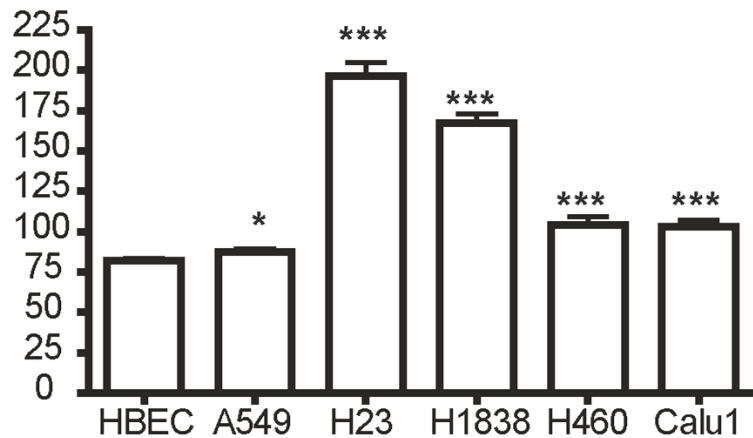


AGR2 overexpressed in lung cancer organoids

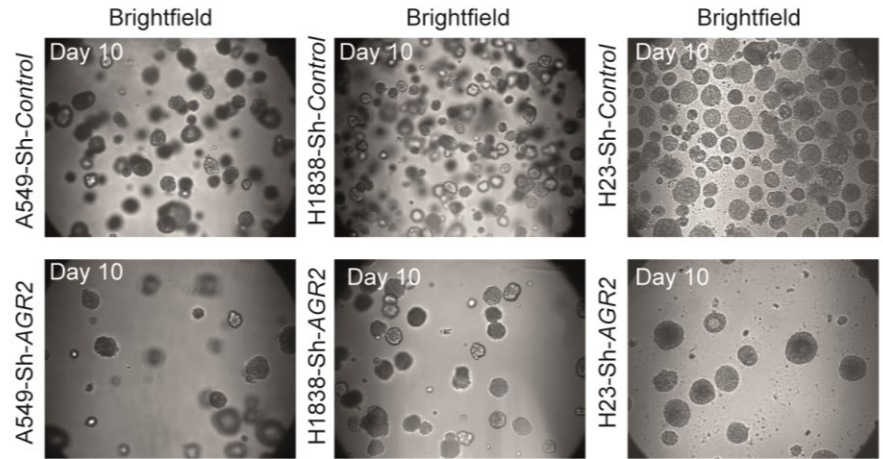
Knocking down AGR2 expression



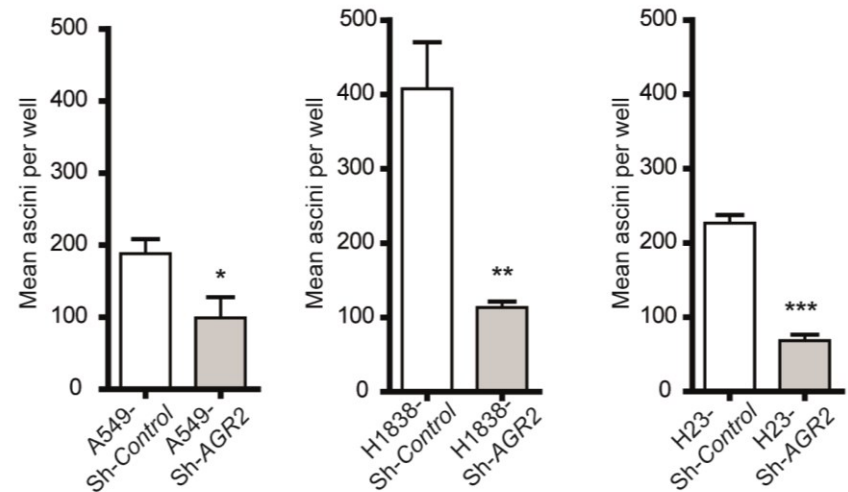
Knocking down AGR2 expression decreases organoid formation



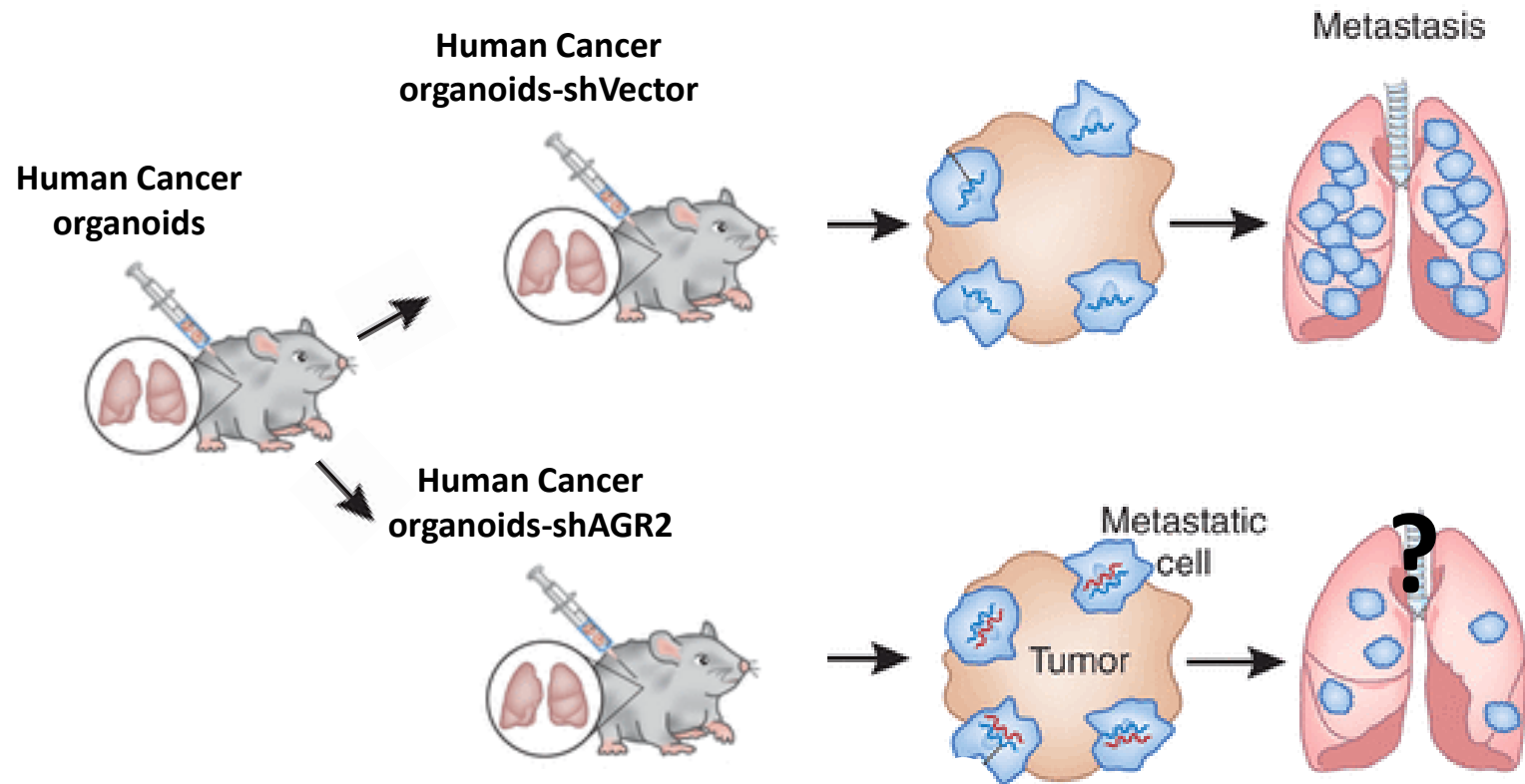
a



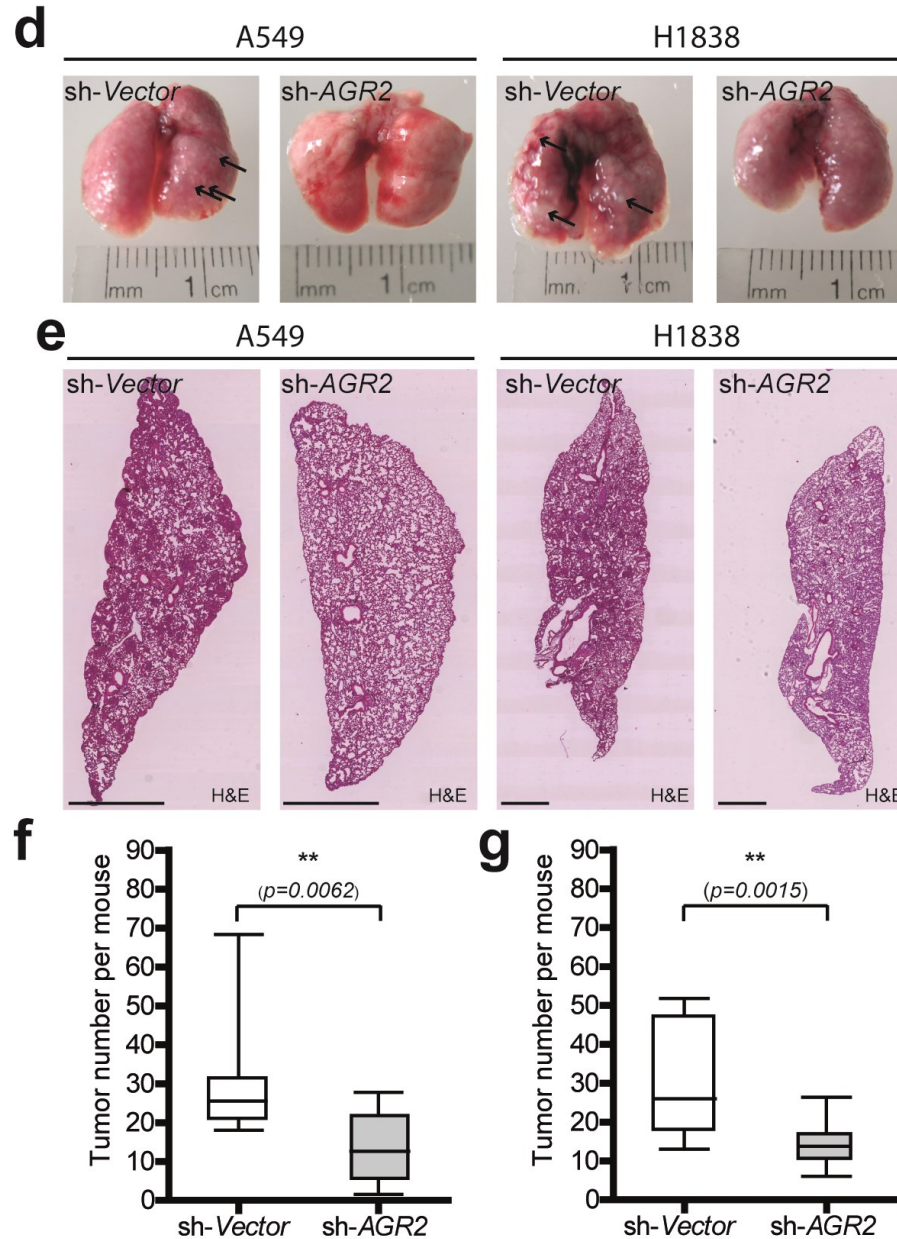
b



Mouse Orthotopic Lung Cancer Model



Knocking down AGR2 expression decreases tumorigenicity in vivo



Knocking down AGR2 expression decreases organoids formation

Cancer Biomarkers 10 (2011/2012) 101–107
DOI 10.3233/CBM-2012-0234
IOS Press

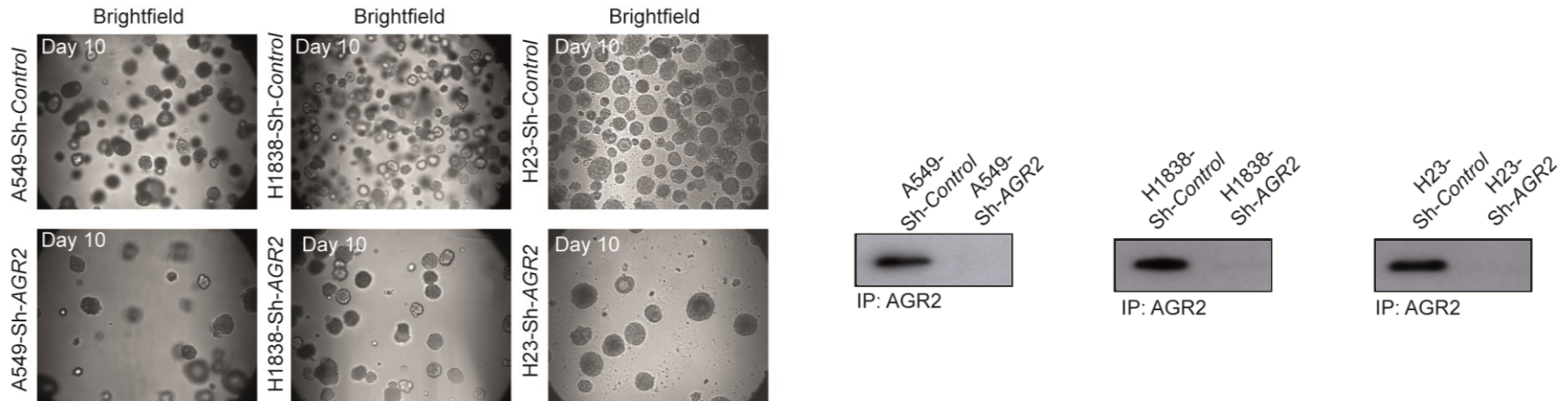
101

Serum AGR2 as an early diagnostic and postoperative prognostic biomarker of human lung adenocarcinoma

Kyukwang Chung^{a,b}, Noritoshi Nishiyama^a, Shotaro Yamano^b, Hiroaki Komatsu^{a,b}, Shoji Hanada^{a,b}, Min Wei^b, Hideki Wanibuchi^{b,*}, Shigefumi Suehiro^a and Anna Kakehashi^b

^aDepartment of Thoracic Surgery, Osaka City University Graduate School of Medicine, Osaka, Japan

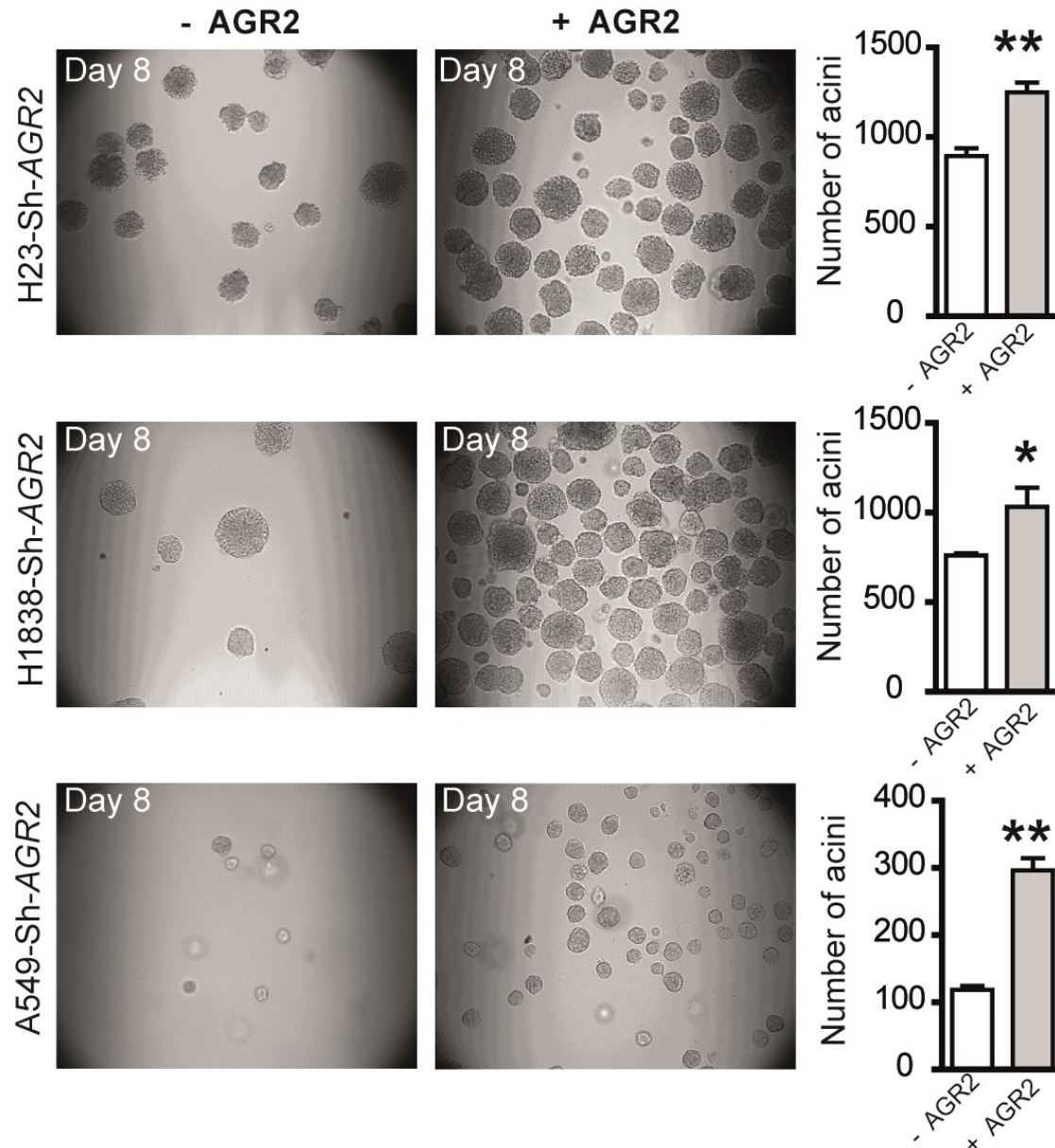
^bDepartment of Pathology, Osaka City University Graduate School of Medicine, Osaka, Japan



AGR2 secreted and organoids formation?

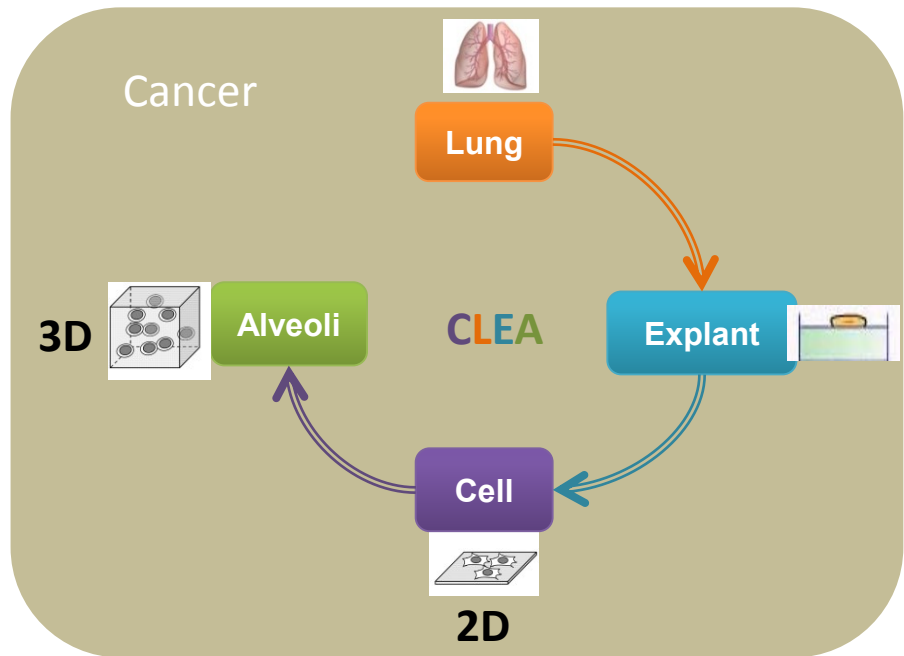
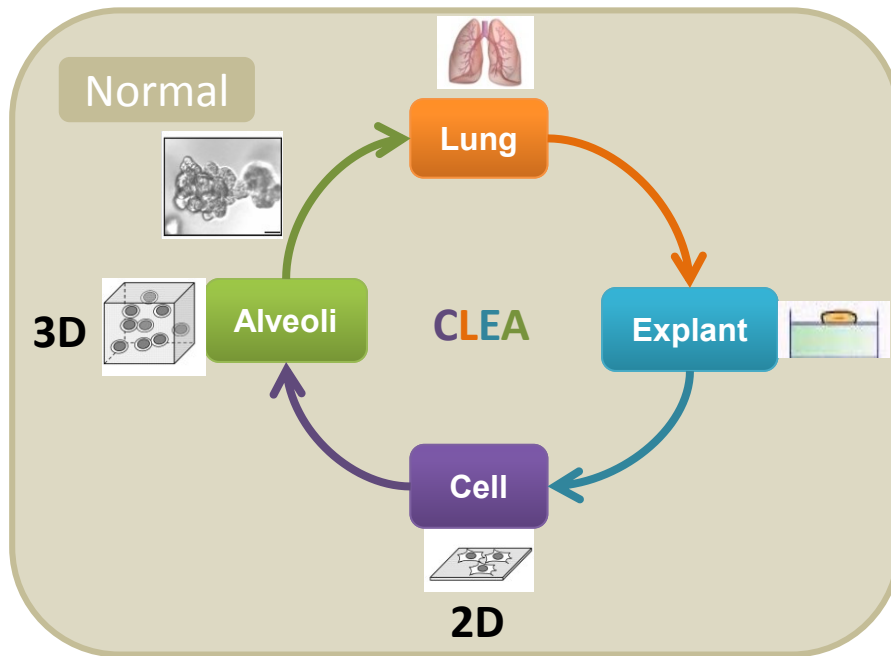
AGR2 secreted modulates organoid formation/tumorigenicity

a



Conclusion

"Cell Lung Explant Alveoli" = CLEA



Candidate or molecules of therapeutic interest on the regeneration, differentiation, morphogenesis and tumorigenesis of human respiratory epithelium

Role of AGR2 secreted in tumorigenicity, suggesting that this protein could be an interesting target for the successful treatment of lung cancer.

Acknowledgements

FD lab



Collaborators

- **Hugues Begueret**: CHU Bordeaux, Bordeaux, France
- **Juliette Mathiaux**: CHU Bordeaux, Bordeaux, France
- **Raphael Pineau**: Université de Bordeaux, Bordeaux, France
- **Kasia A. Rejniak**: Moffit cancer center, Tampa, USA



Grants



COMITE
DORDOGNE

COMITE
AQUITAINE



frederic.delom@yahoo.fr
delphine.fessart@yahoo.fr