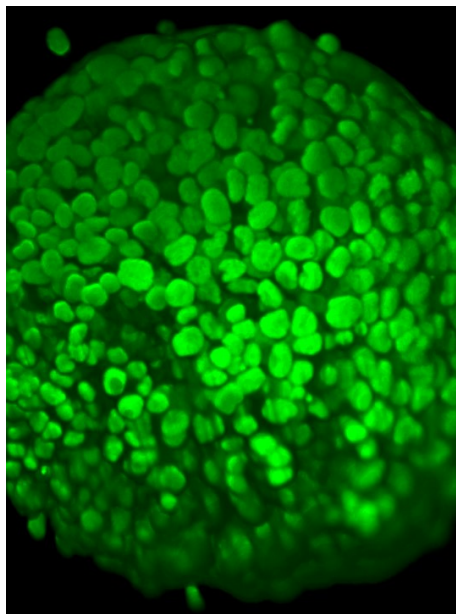


Workshop

3D model and applications in oncology

June 26, 2014

Toulouse



Scientific committee :

Joëlle AMEEDÉ (Bio Tis, Bordeaux)

Gilles DIVITA (CRBM, Montpellier)

Cécile GAUTHIER-ROUVIERE (CRBM, Montpellier)

Valérie LOBJOIS (ITAV, Toulouse)

Marie-Pierre ROLS (IPBS, Toulouse)

Justin TEISSIE (IPBS, Toulouse)



Bordeaux ● Limoges ● Montpellier ● Nîmes ● Toulouse

PROGRAM

09H30 *Attendees Welcome*

INTRODUCTION

10H00 **Therapy testing in 3-D cultures/spheroids: potential, challenges and limitations.**
Leoni A. Kunz-Schughart - Oncoray - Dresden – Germany

BIOENGINEERING OF 3D MODEL

11H00 *Lecture : 3D cell culture & microtechnologies : new insights in carcinoma.*
Nathalie Picollet-D'hahan - CEA - Grenoble

11H45 • 3D role of EMT genes in the survival, proliferation and invasion of mammary epithelial morphogenetic transformed cells. **Pierre Savagner** - IRCM - Montpellier

12h00 • Comparison of a conventional 2D culture of HT29 colorectal cancer cells to a new physiological model of 3D culture based on hyaluronic acid. **Elise Demange** - Celenys - Rouen

12h15 • Use of 2D and 3D models to unravel the effects of electroporation on the extracellular matrix.
Moinecha Madi - IPBS - Toulouse

12h30 *Lunch & POSTERS*

3D MODEL AND THE CONTRIBUTION OF IMAGING

14h00 *Lecture : Interactions between cancer cells and their microenvironment.*
Vasily Gurchenkov - Institut Curie- Paris

14H45 • Quantitative 3D microscopy for widespread histology - **Cyril Petibois** - Inserm U1029 - Bordeaux

15h00 • Tumor-associated macrophages use the mesenchymal migration mode as revealed by high resolution intravital microscopy. **Véronique Le Cabec** - IPBS - Toulouse

15h15 • Preclinical MRI imaging of liver colorectal metastases. **Cyril Ferrer** - IRCM - Montpellier

15h30 *Break & POSTERS*

WHAT IS THE APPLICATION OF 3D MODEL IN ONCO-PHARMACOLOGY ?

16h00 *Lecture : Multicellular tumor spheroid 3D models to decipher cancer cell biology and to evaluate anticancer drugs.*
Valérie Lobjois - ITAV - Toulouse

16H45 • Electroporation as targeting tool for proliferating cells. **Laure Gibot** - IPBS - Toulouse

17h00 • PAR₂-dependant activation of GSK3 β controls the survival of colon progenitors. **Claire Racaud-Sultan** - CPTP - Toulouse

17h15 • Evaluation of pro-oncogenic potential of Anterior Gradient Homolog 2 in a three-dimensional model of lung cancer - **Frédéric Delom** - Centre de recherche Cardio- Thoracique - Bordeaux

17h30 • 5-aza-2'-deoxycytidine, a DNA demethylating agent, inhibits metastatic melanoma invasiveness.
Cécile Desjobert - USR 3388 - Toulouse

ROUND TABLE

17h45 **Round table - Conclusion**